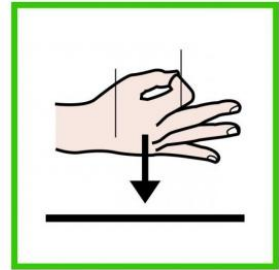


1



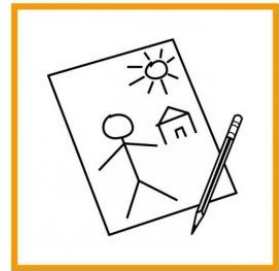
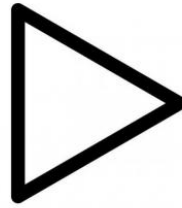
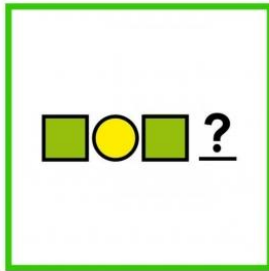
PRIMERO

ADIVINA

QUÉ

ES

2



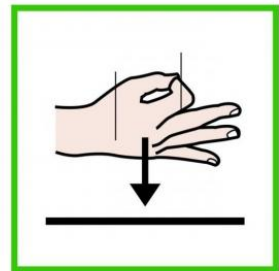
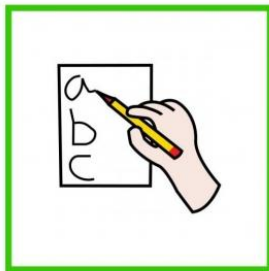
SEGUNDO

COMPLETA

EL

DIBUJO

3



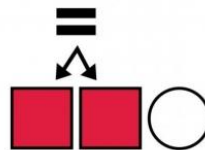
TERCERO

ESCRIBE

QUÉ

ES

4



CUARTO

DIBÚJALO

IGUAL



A large, empty rounded rectangular box for writing or drawing.



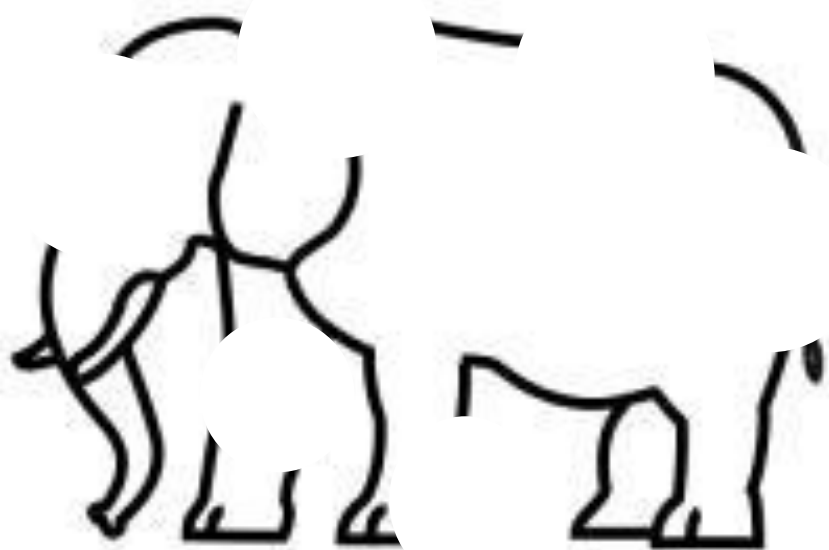
A large, empty square box for writing or drawing.



A large, empty rounded rectangular box, likely intended for a student to write their answer to the question.



A large, empty square box, likely intended for a student to draw a picture related to the question.



A large, empty rounded rectangular box intended for writing the answer to the question.



A large, empty rectangular box intended for writing the answer to the question.



A large, empty rounded rectangular box for writing.



A large, empty square box for writing.





A large, empty rounded rectangular box for writing an answer.



A large, empty square box for writing an answer.



A large, empty rounded rectangular box, likely intended for a student to write their name or a title.



A large, empty square box, likely intended for a student to draw a picture related to the bird or the text.









A large, empty, rounded rectangular box for writing.



A large, empty square box for writing.



A large, empty rounded rectangular box for writing.



A large, empty square box for drawing.



A large, empty rounded rectangular box, likely intended for a student to write their answer to the question.



A large, empty square box, likely intended for a student to draw or show their work.



A large, empty rounded rectangular box, likely intended for a student to write an answer or a short paragraph.



A large, empty square box, likely intended for a student to write a longer answer or a story.



A large, empty rounded rectangular box for writing.



A large, empty square box for writing.



A large, empty rounded rectangular box, intended for a student to write their answer to the question.



A large, empty square box, intended for a student to draw a picture related to the question.



